



**GOVERNORS
FOR SCHOOLS**

Remote Learning – seeking assurance it is fit for purpose

**1st October
2020**



Steve Barker



Linda Waghorn

The aims of today's session:

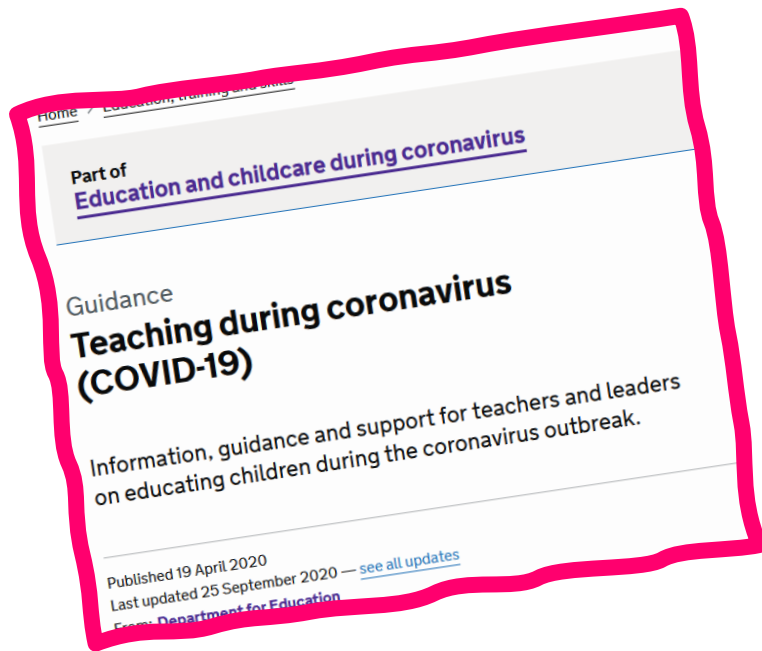
By the end of the session we will have:

- clarified the oversight that boards should have of remote learning plans;
- Explored the latest guidance from Department of Education, which sets out expectations on schools;
- Reflected on how boards seek assurance that robust and effective plans are in place.

Remote Learning?



DfE Expectation



Where a class, group or small number of pupils need to self-isolate, or there are local restrictions requiring pupils to remain at home, we expect schools to have the capacity to offer immediate remote education.

Poll #1

Living up to the DfE expectations

The DfE expects:

- Improving the *existing offer* (i.e. Summer Term)
- *Have a strong contingency plan in place by the end of September (yesterday!)*

Contingency Plan - principles

- *Online and offline resources linked to school curriculum*
- *High quality*
- *Interaction, assessment and feedback*
- *Staff cpd*
- *Hard copies available*
- *Work with families of younger/SEND pupils*

DfE – Guidance for full opening of schools.

Contingency Plan – Teaching expectations

- *Meaningful and ambitious* daily work across different subjects
- Build knowledge and skills
- *Frequent, clear explanations* by the teacher
- *Staff cpd*
- Monitor progress & adapt as necessary
- Daily teaching time equiv to that in school

DfE – Guidance for full opening of schools.

Some practical considerations:

- to inform governor questioning
- Pupil context – age/stage
- Has summer term offer been benchmarked?
- Has home access to IT/internet been audited?
- School platform?
- Staff cpd
- Who will plan and when?

Available Support



Oak Academy – Government funded

- Teaching resources (Year R – Y6)
- Full lessons range of subjects/year groups
- Parent/carer hub
- Teacher hub
- Free



Available Support



- Government-funded access
- Includes user training (i.e. teachers)

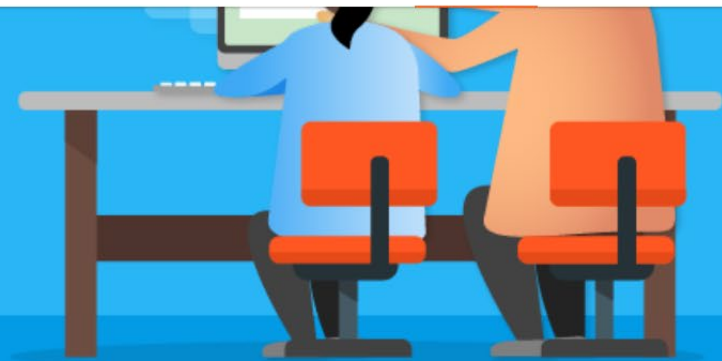
Available Support



[The Big Picture](#) [Evidence summaries](#) [Practical Tools](#) [Projects and Evaluation](#) [Support for schools](#) [Covid-19 Resources](#) [News](#) [More](#) [Q](#)

Covid-19 support guide for schools

Guide designed to help teachers and school leaders support their pupils



Published 19th June, 2020



Last updated 10th September, 2020

▼ Covid-19 support guide for schools



**GOVERNORS
FOR SCHOOLS**

Governance Questions to reflect on:

- Which platform (online learning) are we using?
- How quickly can remote learning happen?
- Home access?
- Home engagement in learning?
- How will impact be monitored?
- Impact on teacher workload?
- What if teachers are ill?

Any further questions?



Further information

- DfE – Full opening of Schools
<https://www.gov.uk/government/publications/actions-for-schools-during-the-coronavirus-outbreak/guidance-for-full-opening-schools#res>
- Oak Academy
<https://www.thenational.academy/>
- Education Endowment Foundation
<https://educationendowmentfoundation.org.uk/covid-19-resources/national-tutoring-programme/covid-19-support-guide-for-schools/>



What you need to know, when you need to know it



Copyright © Babcock Integration LLP (2015).

Better Governor researches, interprets and distils the latest news in education policy, legislation and practice keeping you informed on how they impact your role as a governor or clerk.

www.bettergovernor.co.uk